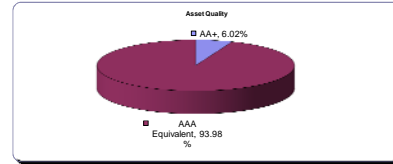


IDFC SUPER SAVER INCOME FUND - MEDIUM TERM PLAN (30 July, 2010)

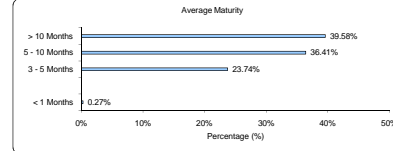
Average AUM **371.76 Crs**

Name	Rating	Total
CLEARING CORPORATION OF INDIA LTD.		0.27%
CBLO TOTAL		0.27%
ORIENTAL BANK OF COMMERCE	P1+	17.47%
ANDHRA BANK LTD	F1+(IND)	11.75%
PUNJAB NATIONAL BANK	PR1+	11.64%
INDIAN BANK	F1+(IND)	5.79%
CANARA BANK	P1+	4.63%
KARNATAKA BANK LTD	A1+	4.60%
DENA BANK	P1+	2.31%
JAMMU & KASHMIR BANK LIMITED	P1+	1.15%
CERTIFICATE OF DEPOSIT TOTAL		59.35%
RELIANCE UTILITIES & POWER PVT.LTD.	CAREAAA	12.14%
L&T FINANCE LTD	CAREAAA	6.02%
INFRASTRUCTURE DEVELOPMENT FINANCE COMPANY LTD.	AAA	3.79%
STATE BANK OF INDIA	AAA	2.55%
NATIONAL HOUSING BANK	AAA	2.48%
POWER FINANCE CORPORATION LIMITED	AAA	2.39%
EXPORT IMPORT BANK OF INDIA	AAA	1.28%
NON CONVERTIBLE DEBENTURES TOTAL		30.62%
7.80% GOI (MD 03/05/2020)	SOV	6.02%
7.17% GOI (MD 14/06/2015)	SOV	2.37%
GOVT SECURITIES(GSE) TOTAL		8.40%
Net Current Asset		1.33%
Grand Total		100.00%

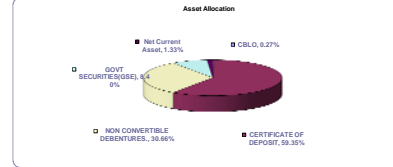
Asset Quality



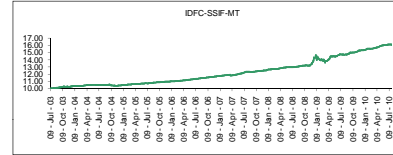
Average Maturity in Years **2.35**



Asset Allocation



NAV Movement



Nav Information

Nav As of		30-Jul-10
IDFC-SSIF-MT Plan A Growth		16.0684
IDFC-SSIF-MT Plan A Dividend	Bi-Monthly	10.4775
IDFC-SSIF-MT Plan A Dividend	Fortnightly	10.0455
IDFC-SSIF-MT Plan A Month	Monthly	10.1438
IDFC-SSIF-MT Plan A	Daily	10.2949
IDFC-SSIF-MT Plan B Dividend		11.4045
IDFC-SSIF-MT Plan B Growth		10.1991
IDFC-SSIF-MT Plan F Growth		10.3917

Performance

Performance under IDFC SSIF - MTP - Plan A - Growth

Period	Returns	30-Jul-10	Benchmark Returns
Last 1 Year	CAGR	9.26%	4.44%
Last 2 Year	CAGR	11.21%	7.90%
Last 3 Year	CAGR	9.21%	7.19%
Last 5 Year	CAGR	8.26%	6.71%
Since Allotment 08/07/2003	CAGR	6.94%	5.99%

Past performance may or may not be substantiated in future.

* Benchmark returns as on 30 Jul, 2010 . CRISIL Short-Term Bond Fund Index